

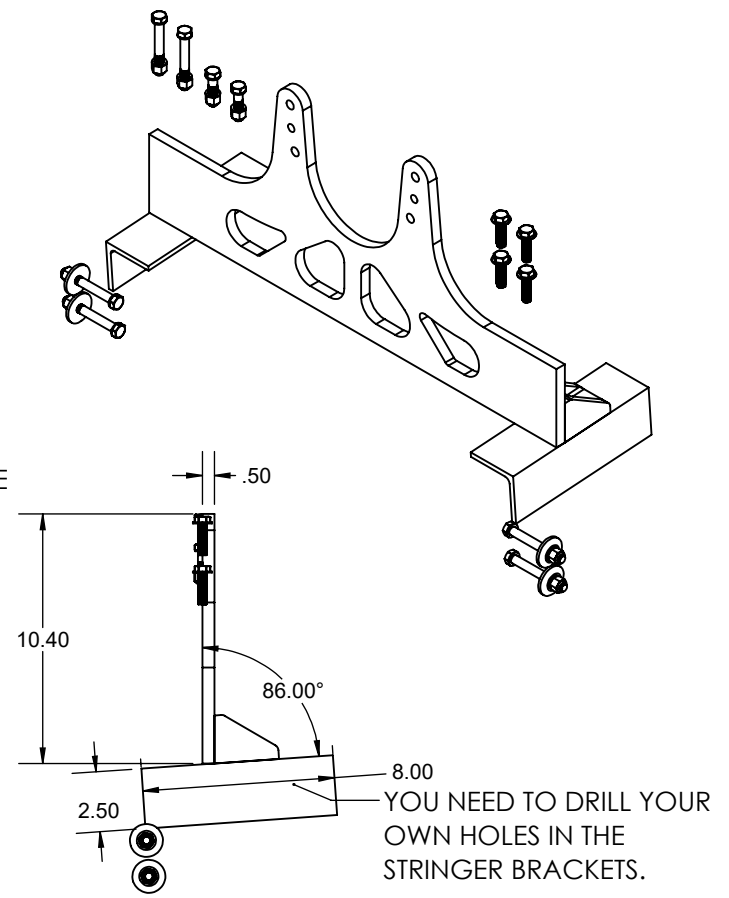
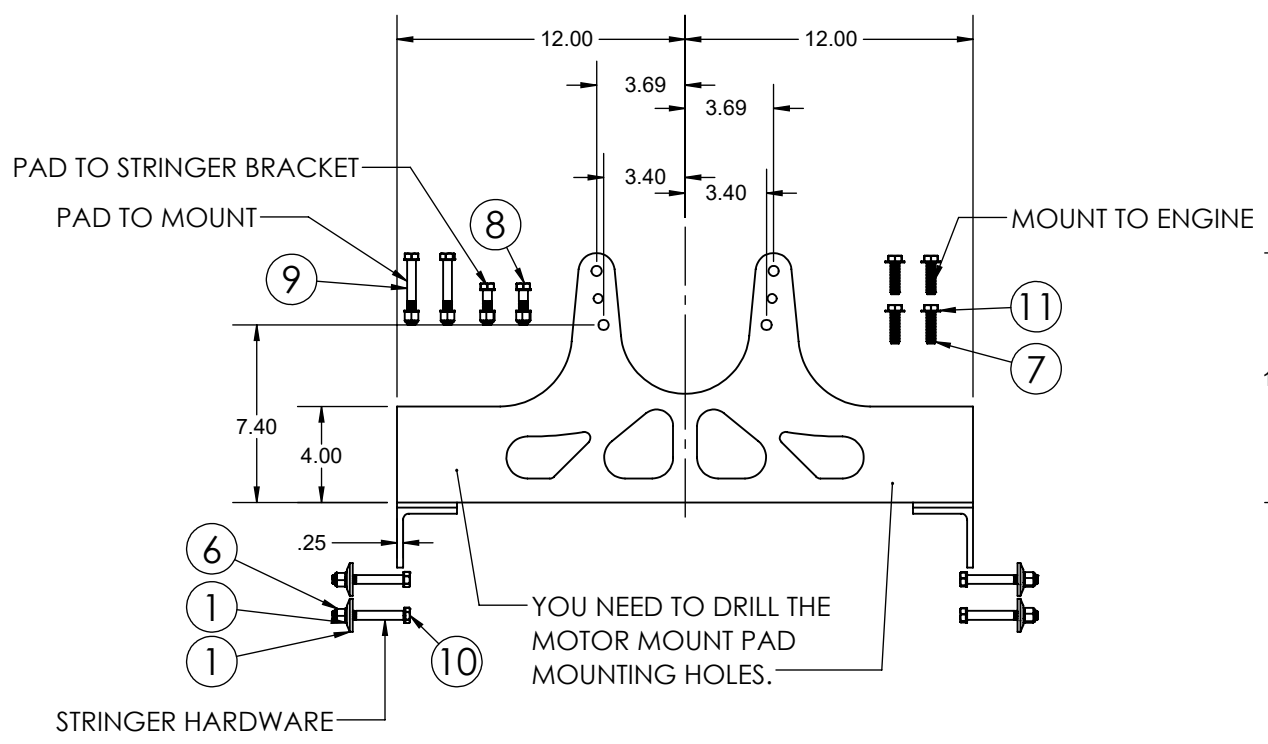
HARDIN 11 Industry Dr. Palm Coast, FL 32137
 MARINE 386-445-2500 / FAX 386-445-1122

PART NO.
 620-10045

TITLE:
OLDS 455 FRONT MOTOR MOUNT

www.hardin-marine.com

ITEM NO.	PART NUMBER	DESCRIPTION	QTY.
1	125-377211	WASHER, STRINGER - 3/8	4
2	620-10044	BRACKET, STRINGER	2
3	620-10045K	MOUNT, FRONT OLDS 455 JET	1
4	620-52375	MOUNT PAD	2
5	90037AN-STSS	WASHER, 3/8 AN	16
6	90037CN-FNSS	NUT, 3/8-16	8
7	90037C125HHS	BOLT, 3/8-16x1.25	4
8	90037C150HHS	BOLT, 3/8-16x1.50	2
9	90037C275HHS	BOLT, 3/8-16x2.75	2
10	90037C300HHS	BOLT, 3/8-16x3.00	4
11	90037SA-STSS	WASHER, 3/8 SAE	4



THIS DRAWING IS CONFIDENTIAL AND IS SUPPLIED ON EXPRESS CONDITION THAT IT SHALL NOT BE LENT, COPIED OR DISCLOSED TO ANY OTHER PERSON OR USED FOR ANY OTHER PURPOSE WITHOUT WRITTEN CONSENT OF HARDIN MARINE INC.. BREACH OF THIS CONTRACT WILL HOLD AND IT'S PRINCIPALS LIABLE FOR LOSS AND DAMAGES.