

**GEN 7 PLUS SEA PUMP
w/ BILLET PULLEY**
625-4131

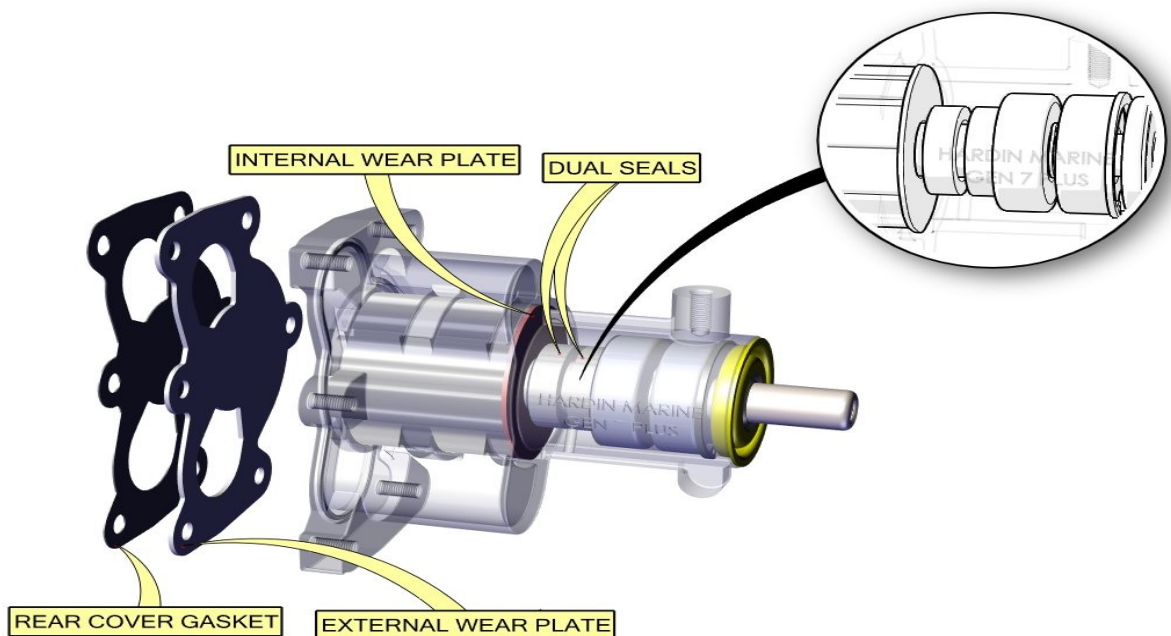


GEN 7 PLUS SEA PUMP w/ BILLET PULLEY

625-4131

HARDIN MARINE ADVANTAGE

- **316 STAINLESS STEEL POLISHED BODY.**
- **INTERNAL WEAR PLATE DESIGN PROVIDES A LIFETIME OF SERVICE.**
- **EXTERNAL WEAR PLATE ALLOWS STOCK REAR COVER TO BE REUSED REGARDLESS OF PREVIOUS WEAR DAMAGE.**
- **20% LARGER PUMP SHAFT ACCEPTS MOST POPULAR OEM MERCURISER IMPELLERS**
- **40% LARGER BEARINGS FOR INCREASED LONGEVITY.**
- **DUAL SHAFT SEALS WITH WATER WEEP HOLE.**
- **BILLET ALUMINUM BLACK ANODIZED SERPENTINE PULLEY**

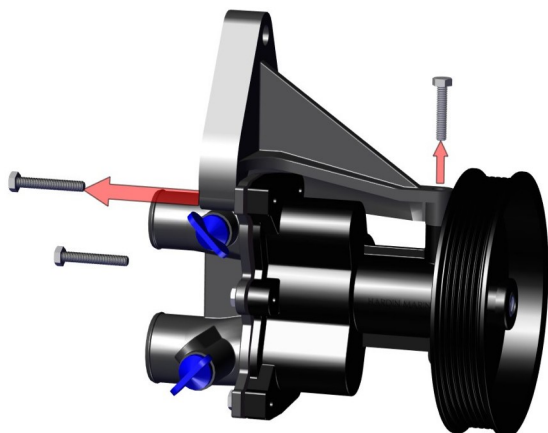


GEN 7 PLUS SEA PUMP w/ BILLET PULLEY

625-4131

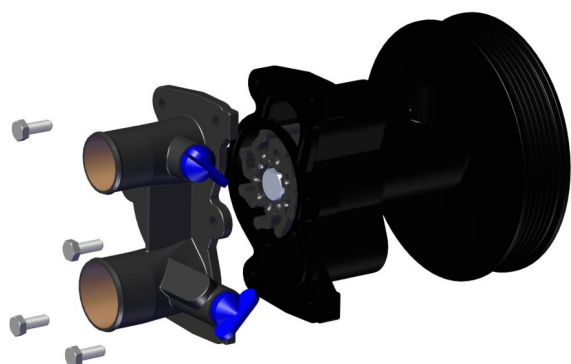
Step 1

1. Remove the belt.
2. Remove both hoses from the pump.
3. Using a 10 mm socket, remove the 3 bolts as shown.



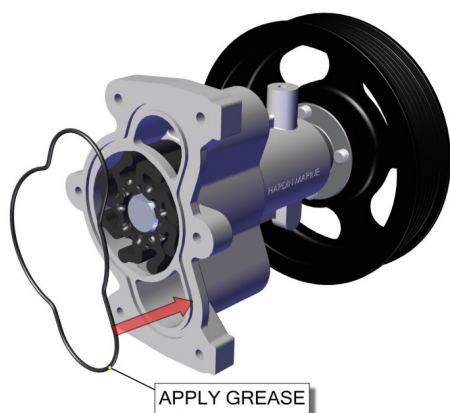
Step 2

1. Using 10 mm socket remove the remaining 4 bolts as shown.
2. Save the rear cover.



Step 3

1. Apply white lithium grease to the o-ring and install into the new pump housing groove.
2. Apply whiter lithium grease on the end of the impeller.

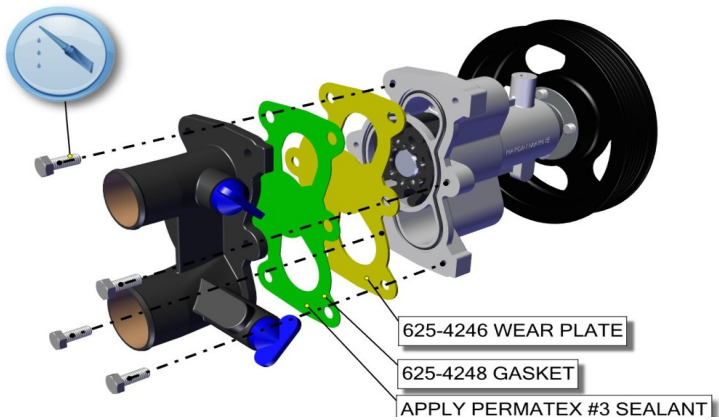


GEN 7 PLUS SEA PUMP w/ BILLET PULLEY

625-4131

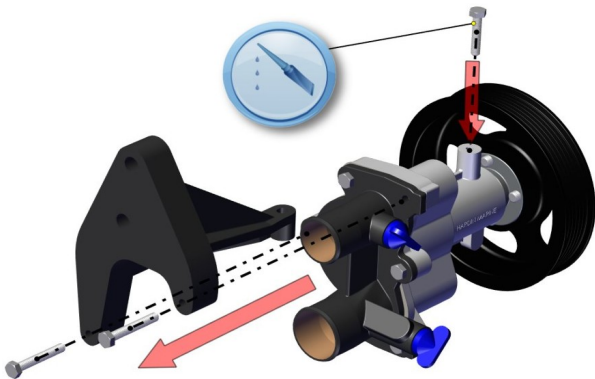
Step 4

1. Apply Permatex #3 sealant to both sides of gasket, as shown.
2. Apply anti-sieze to the 4 rear cover bolts.
3. Install rear cover, gasket & wear plate as shown.
4. Lightly tighten the bolts.



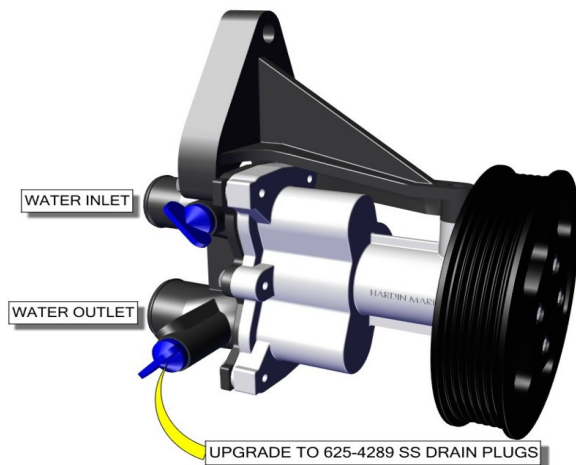
Step 5

1. Apply anti-sieze to the remaining 3 bolts.
2. Install pump as shown.
3. Torque all 7 bolts to 6 ft. lbs..



Step 6

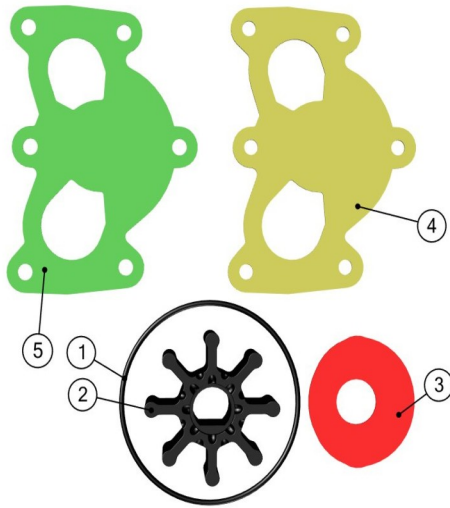
1. Attach hoses and belt. Check belt alignment.
2. As a preventive maintenance, replace the plastic Mercury drain plugs with Hardin stainless steel drain plugs.



GEN 7 PLUS SEA PUMP w/ BILLET PULLEY 625-4131

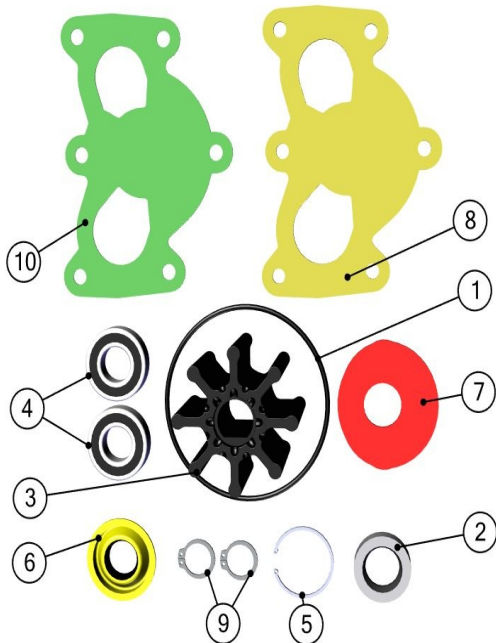
REPLACEMENT REBUILD KITS

625-4203 STANDARD REBUILD KIT



#	PART #	DESCRIPTION	QTY
1	625-1053	O-RING	1
2	625-4080	IMPELLER	1
3	625-4245	WEAR PLATE-INT.	1
4	625-4246	WEAR PLATE-REAR	1
5	625-4248	GASKET	1

625-4133 MASTER REBUILD KIT



#	PART #	DESCRIPTION	QTY
1	625-1153	O-RING	1
2	625-4234	SEAL	2
3	625-4080	IMPELLER	1
4	625-4302	BEARING	2
5	625-4305	SNAP RING	1
6	625-4304	SEAL	1
7	625-4245	WEAR PLATE-INT	1
8	625-4246	WEAR PLATE-REAR	1
9	625-4303	SNAP RING	2
10	625-4248	GASKET	1

HARDIN
MARINE

11 Industry Dr. Palm Coast, FL 32137
386-445-2500 / FAX 386-445-1122

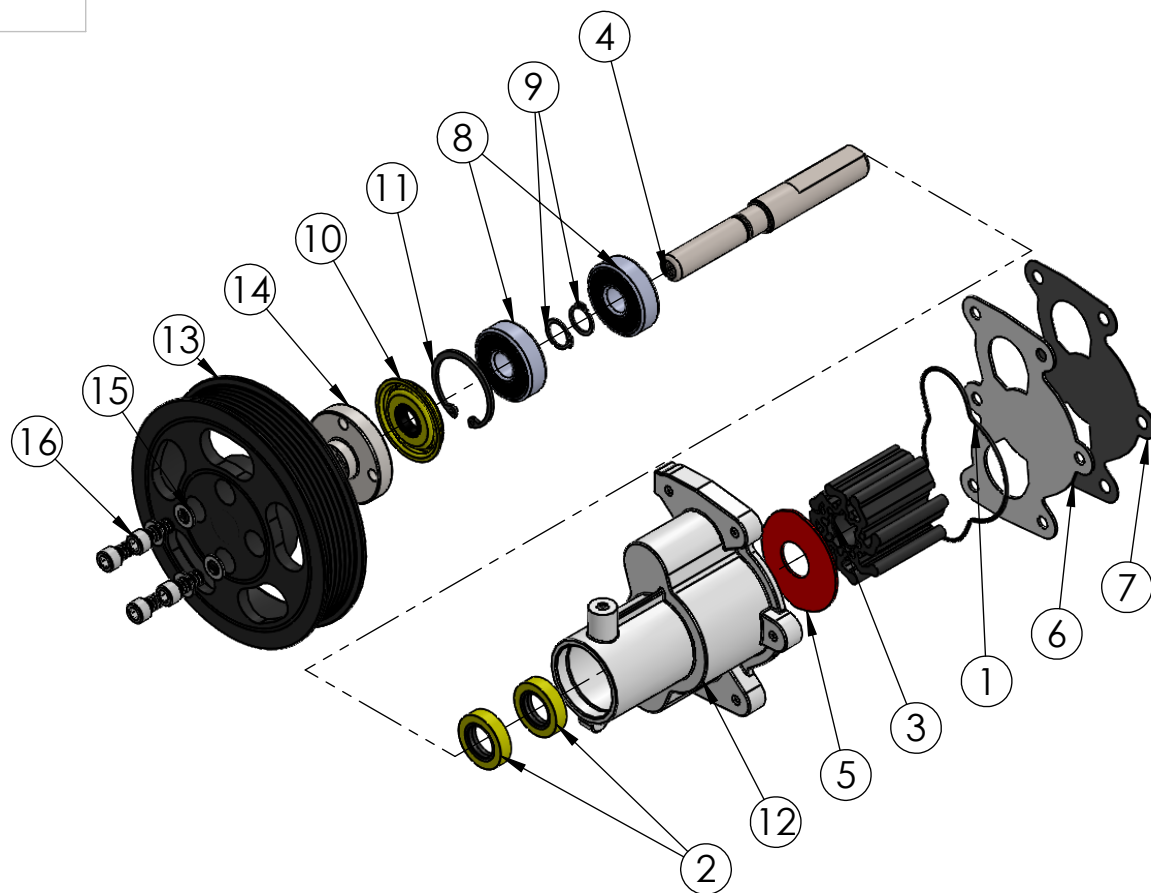
PART NO.
625-4131/
625-4132

www.hardin-marine.com

TITLE:

GEN 7 HD SEA PUMP

ITEM NO.	PART NUMBER	DESCRIPTION	QTY.
1	625-1153	O-RING, GEN 7	1
2	625-4234	SEAL, GEN 7/8 SEA PUMP	2
3	625-4011	IMPELLER, SEA PUMP	1
4	625-4301	SHAFT, SEA PUMP	1
5	625-4245	WEAR PLATE, INTERNAL	1
6	625-4246	WEAR PLATE, REAR	1
7	625-4248	GASKET, GEN 7	1
8	625-4302	BEARING, SEA PUMP	2
9	625-4303	SNAP RING, SHAFT	2
10	625-4304	SEAL, FRONT	1
11	625-4305	SNAP RING, HOUSING	1
12	625-4308	BODY, GEN 7	1
13	625-4262	PULLEY	1
14	625-4263	HUB, GEN 7 SEA PUMP	1
15	90031AN-STSS	WASHER, 5/16 AN	4
16	90031F075SHS	BOLT, SHCS, 5/16-18x3/4	4



625-4131 PUMP WITH PULLEY COMES WITH ALL OF THEM

625-4132 BASE PUMP COMES WITH PARTS 1-13

625-4203 IMPELLER KIT COMES WITH 1,3,5,6 & 7

625-4133 MASTER REBUILD KIT COMES WITH 1,2,3,5,6,7,8,9,10 & 11

THIS DRAWING IS CONFIDENTIAL AND IS SUPPLIED ON EXPRESS CONDITION THAT IT SHALL NOT BE LENT, COPIED OR DISCLOSED TO ANY OTHER PERSON OR USED FOR ANY OTHER PURPOSE WITHOUT WRITTEN CONSENT OF HARDIN MARINE INC.. BREACH OF THIS CONTRACT WILL HOLD AND IT'S PRINCIPALS LIABLE FOR LOSS AND DAMAGES.